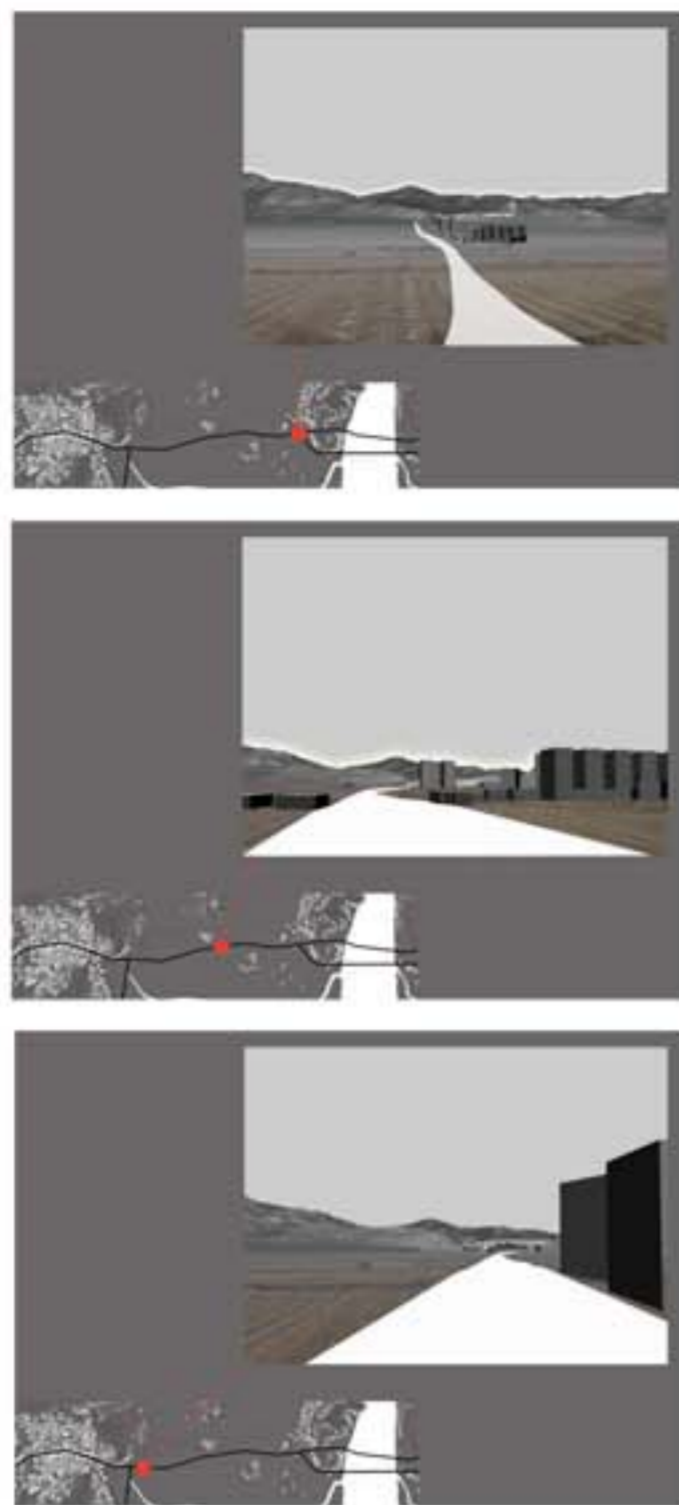
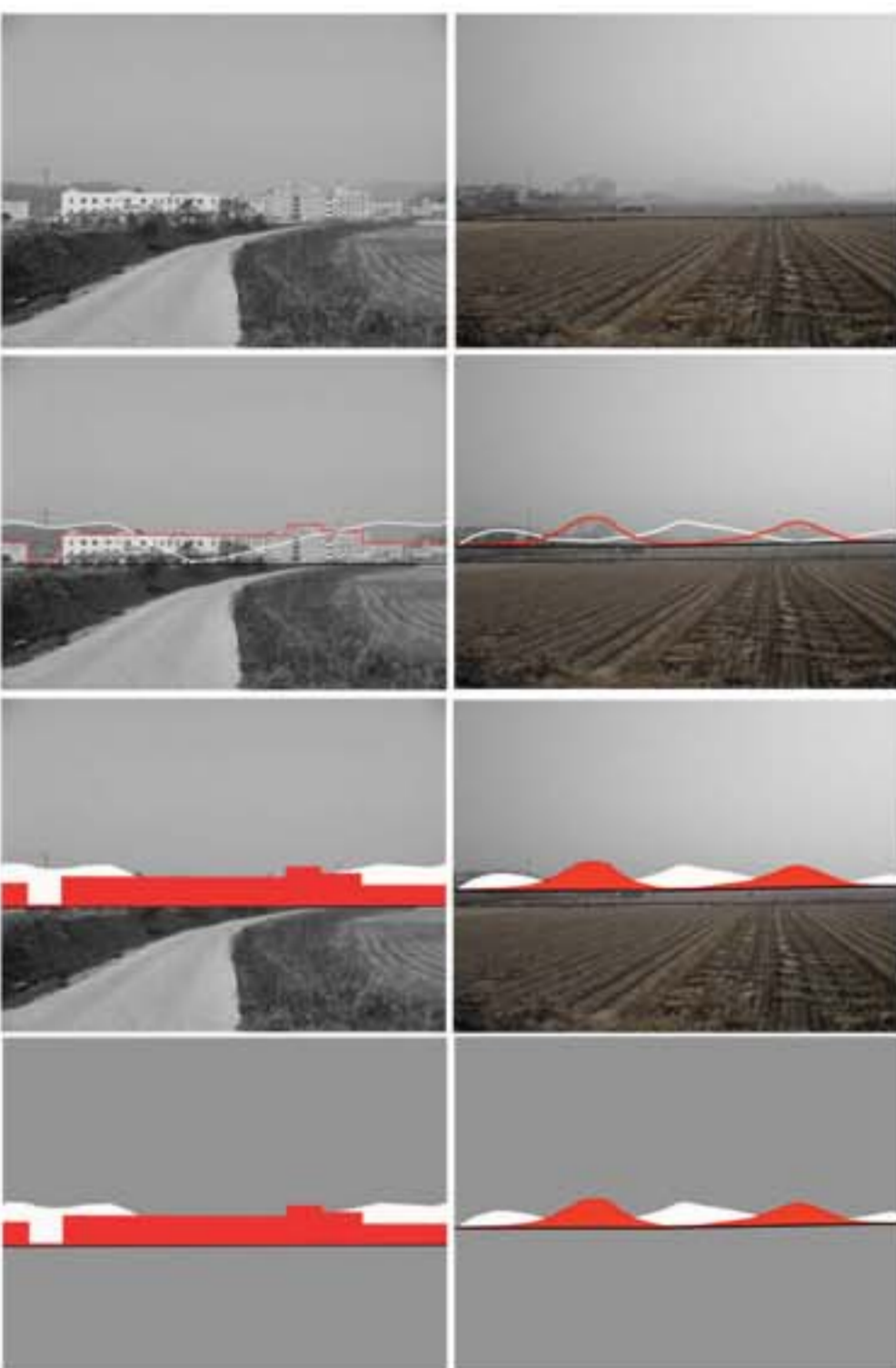


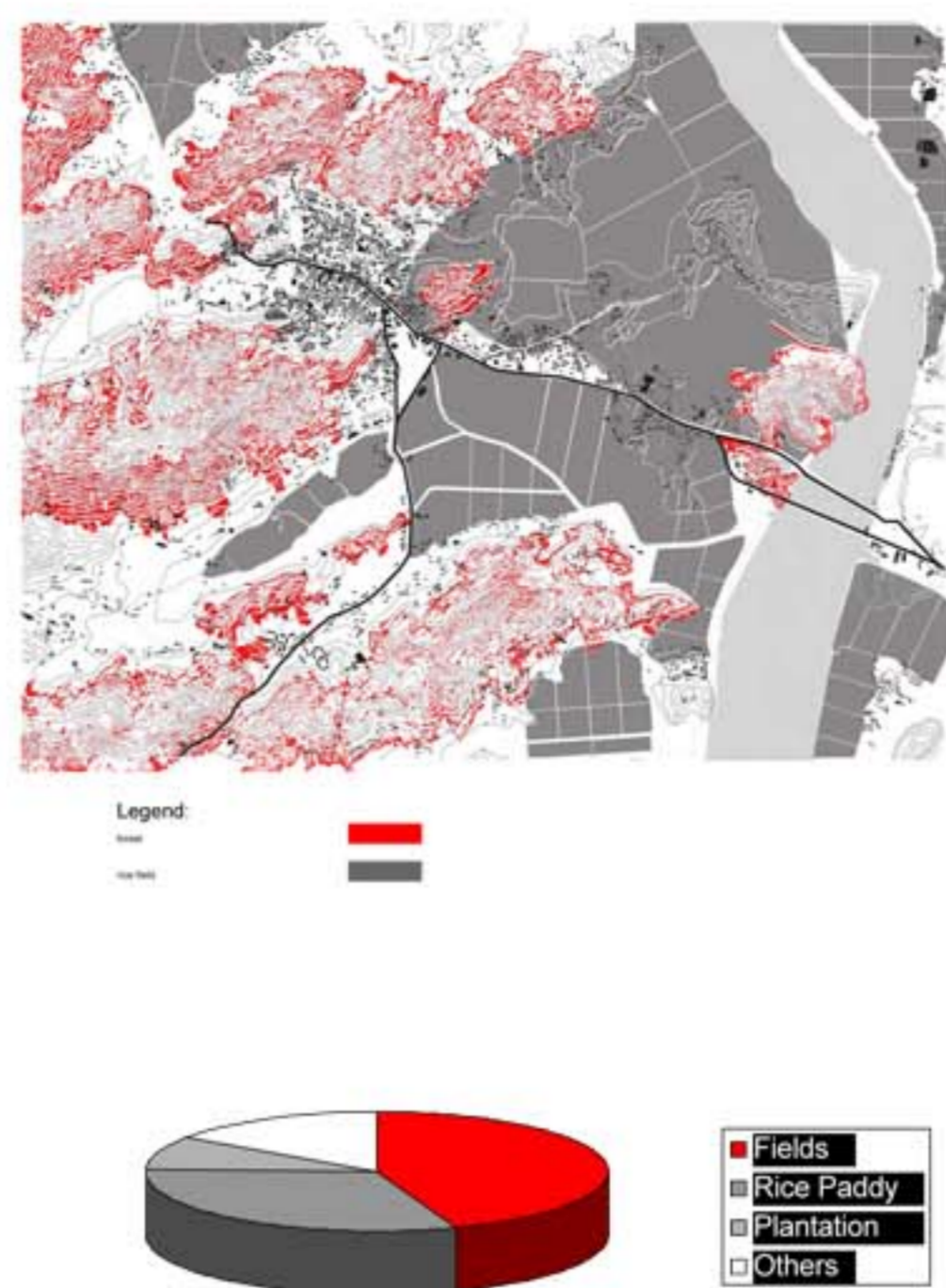
VISUAL ANALYSIS:

Many heavy infrastructures hide the horizon and the natural and typical landscape.



TERRITORY ANALYSIS:

The major land use in Ganghwa is the agriculture with rice fields, and the forest on the hills.



CONCEPT:

Our concept is to dis-urbanize the main road to valorize and emphasise typical, natural and cultural landscape of Ganghwa island. To achieve this goal we created a new pole of urbanisation at the eastern part, the entrance to Ganghwa where the new infrastructures will not disturb the landscape. The repercussion of this action will be to create a new entry zone to the island. The new gate to the historical landscape and town of Ganghwa. Two poles, linked by beautiful landscape.

