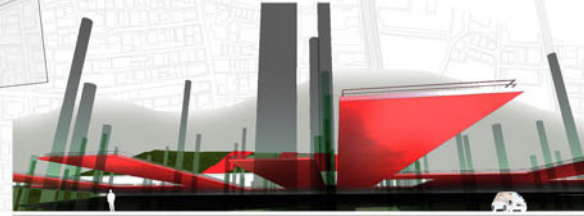
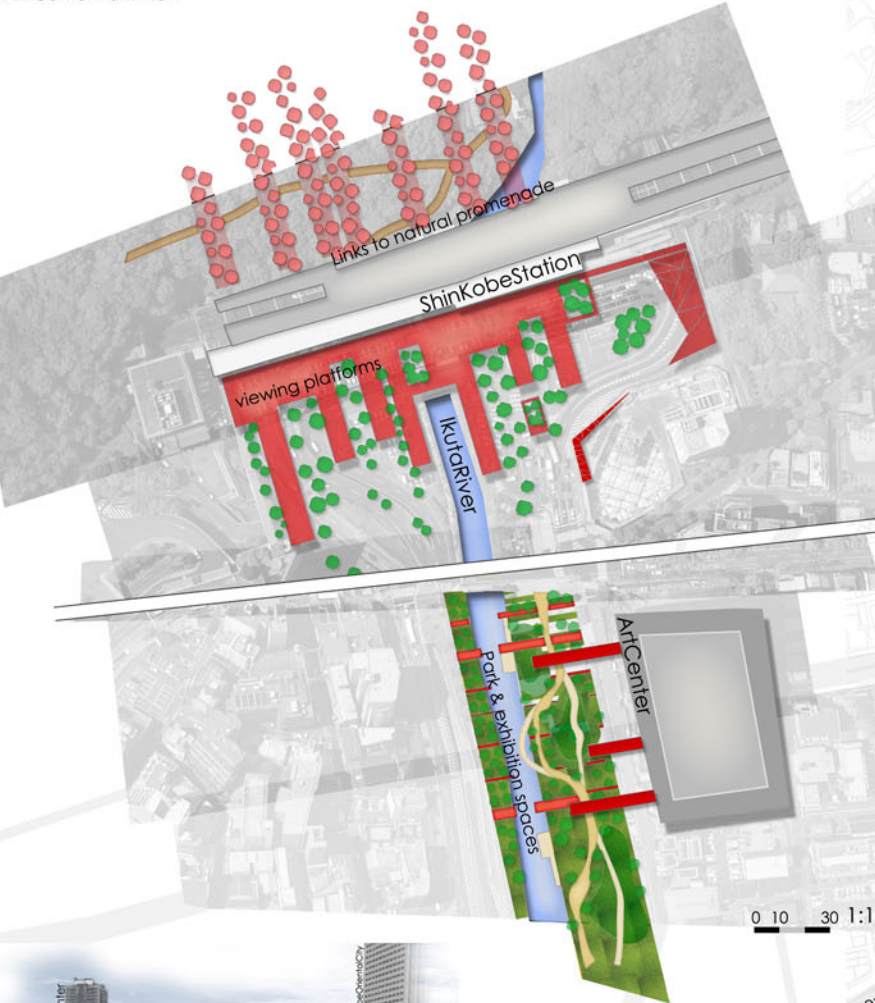


Micro Design Plans



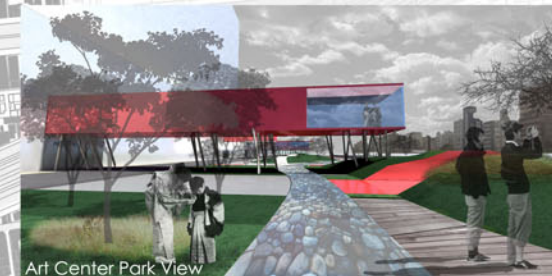
Art Center Park View



View of ShinKobe Station



Aquatic Park View



Art Center Park View



Aquatic Park View

0 10 30 1:1000

Throughout our intervention, we expect solving some of the Main Problems of the City of Kobe and specifically the ones relating to the Ikuta River Valley.

We tried re-valoring the potentials of the Site, and it's existing conditions (i.e the Existing Park) by:
Re-emphasizing the City Gates of Kobe which extend along the river channel, throughout interesting, varied and site specific activities.

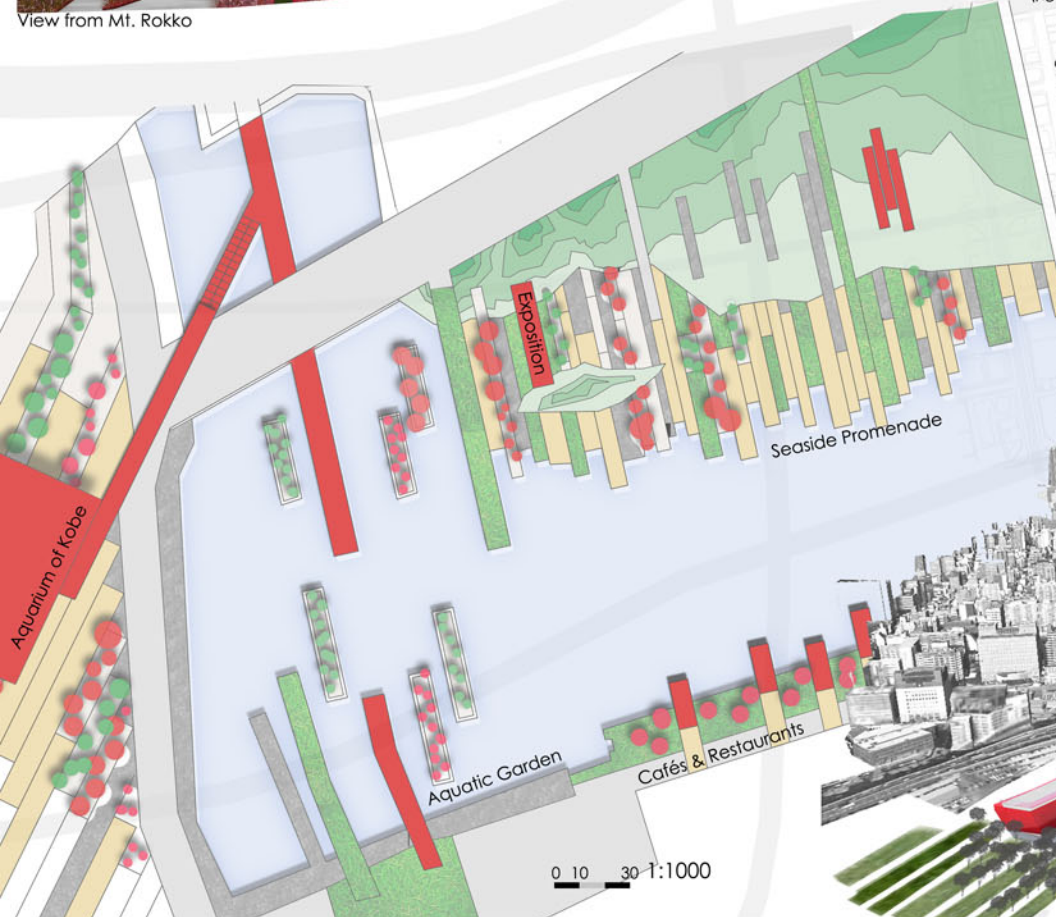
As well as creating a Dynamism along the river Canal and inviting various users to experience it. The Activities Vary from Artistic Cultural activities (relating to the Art Center...), to sports activities and then to the more Natural experiences (the viewing platforms at ShinKobe Station, and the Aquarium at the river Mouth, Sea Side Promenade and Aquatic Gardens at the River Mouth....

0 20 60 1:2000 N

Aquatic Park / Ikuta River View



View from Mt. Rokko



0 10 30 1:1000