

Through gardens 通り庭

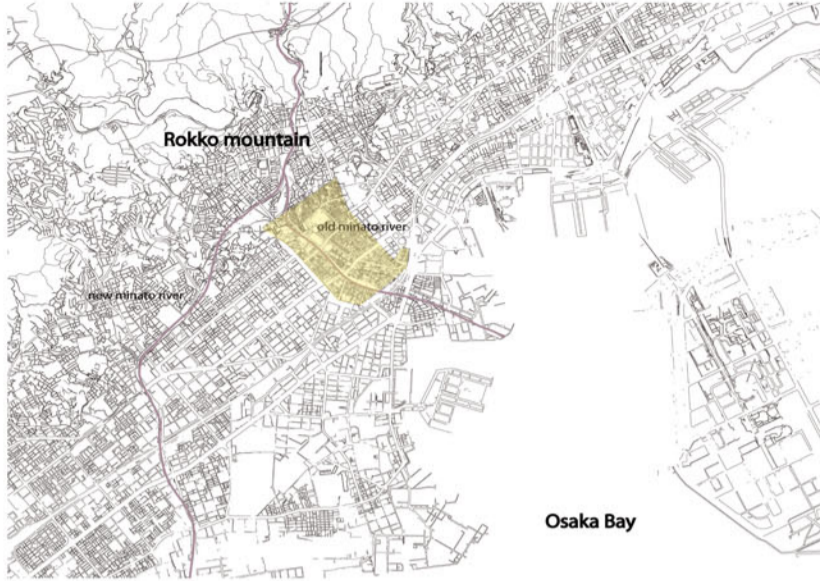
Location in Kobe

The site of old Minato River has played a major role in history of Kobe and is the historical center of the city. The site is located between the main market of Kobe, a main shrine, train station and a bus station.

Now, this area is facing many challenges and many issues affecting the social and economical development. The issues are:

- The decline of the commercial function.
- Enhancement of the old historical area.
- Identity problems.
- Bad image of the area because of the prostitution area, the gambling centers, homeless people, aged people and safety issue.
- The separation between the neighborhoods.

In the same time, the site has many strengths points such as the active local community, the cultural and entertainment centers and activities and beside the advantages of the site.



Analysis

FUNCTIONS AND IDENTITIES OF DIFFERENT DISTRICTS

Preservation and valuation of the various local identities



OPEN SPACES



ROAD ANALYSIS

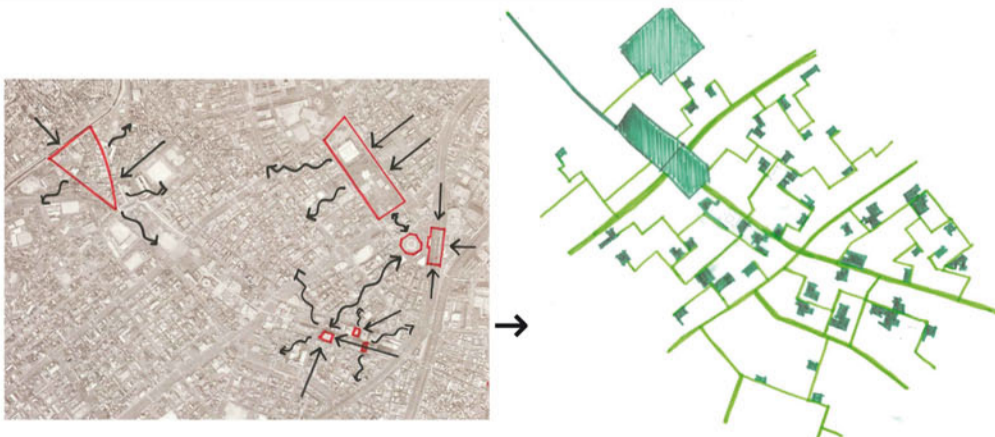
There are important access that connect with rest of the city, but they act like voids and discontinuities in that human scale area. They must be preserved, but must become links and have a more human scale.



CHARACTERIZATION OF THE COMMERCIAL STREET



CONCEPT



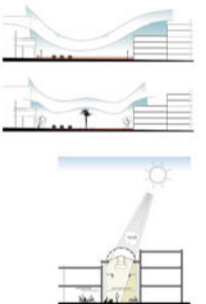
There are major attractions at the city scale. We use them to bring people of Kobe, and then they radiate throughout the district and connect with other attractions.

Connections are made by a network of small urban spaces that meet different needs, such as playgrounds for children, vegetable garden and exterior art spaces.



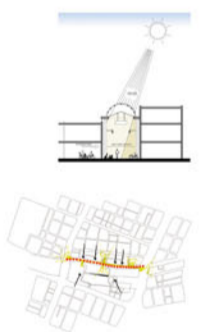
FOCUS ON SHINKAICHI

- 1 Take advantage of the cultural facilities to design the urban spaces around such as places for exterior exhibitions, exterior scenery, etc...
- 2 Use the actual big empty spaces to make urban places that connect the roads together.
- 3 Take advantage of the existing Community center at this place to promote participative design.
- 4 Work on the street to make it more human scaled, and to connect the two commercial areas.



FOCUS ON COVERED GALLERY

- 5 Work on the roof and make it transparent, so the street become more illuminated, safe and colorful.
- 6 Use empty spaces on the side and the alleys to put social activities, and also to connect the gallery with the rest of the district.
- 7 Organizing the circulation: pedestrian and cycling.



FOCUS ON THE PARK

- 8 Park have to become a meeting place between various districts. Link the park with the underground shopping area and make it more human.



FOCUS ON THE POCKET PARKS

- 9 Connect market to the park
- 10(11) Participative design with the community

